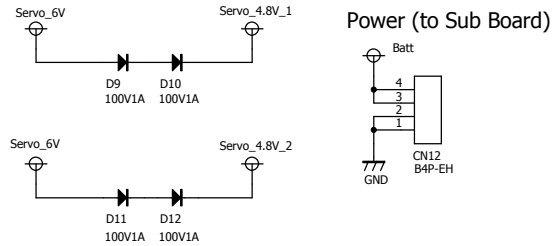
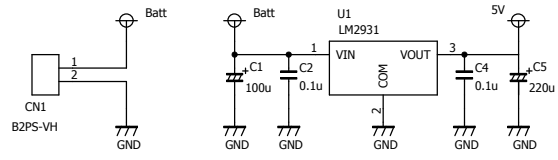
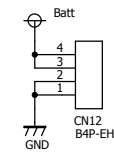


I/F Board

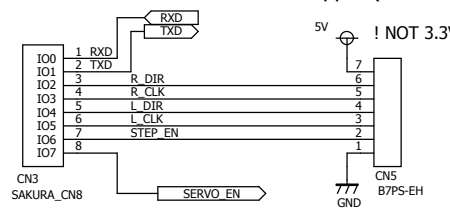
Power (NiMH 1.2V x 5Cells)



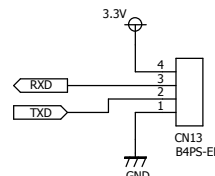
Power (to Sub Board)



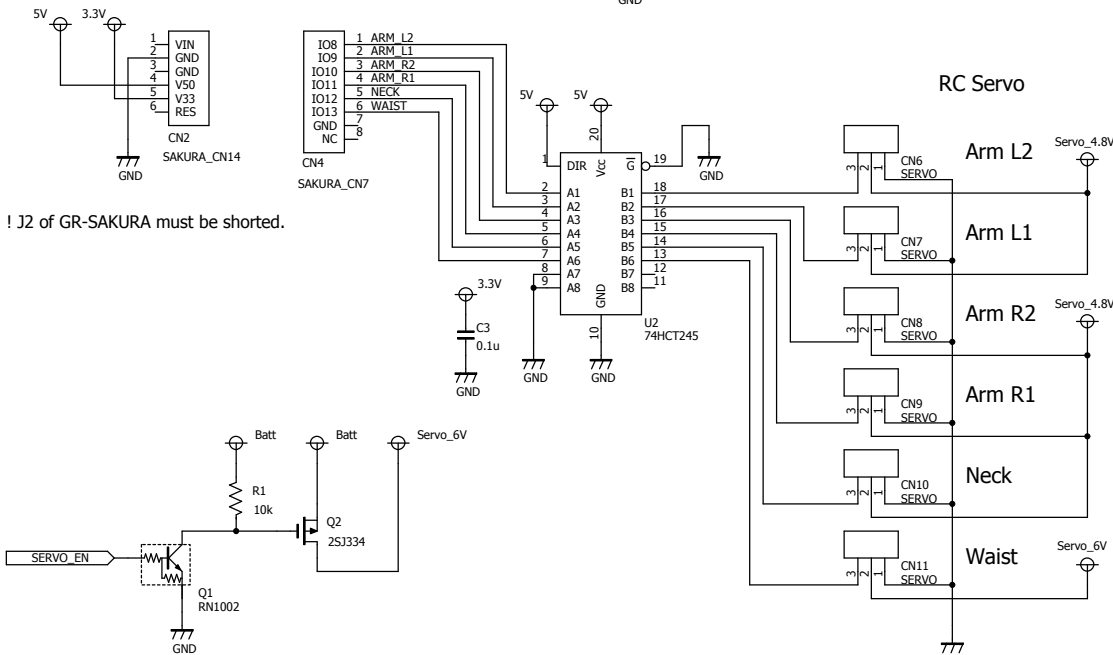
Stepper (to Sub Board)



Bluetooth Module



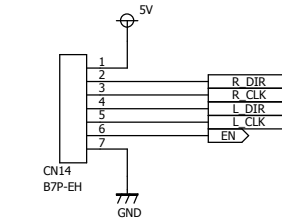
RC Servo



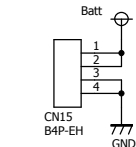
! J2 of GR-SAKURA must be shorted.

Sub Board

Control (from I/F Board)

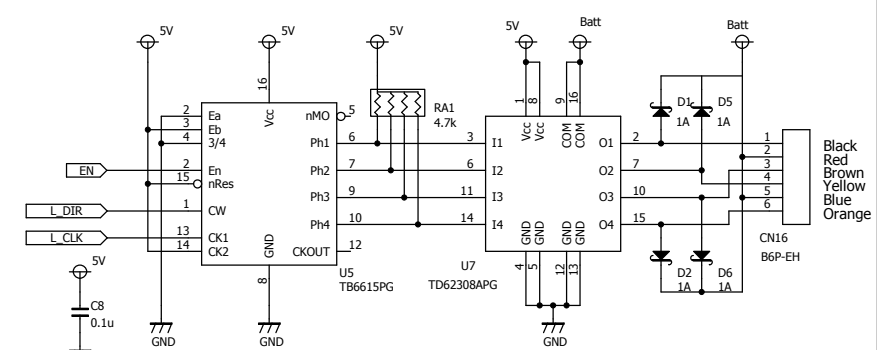


Power (from I/F Board)



Stepper Motor Driver (L)

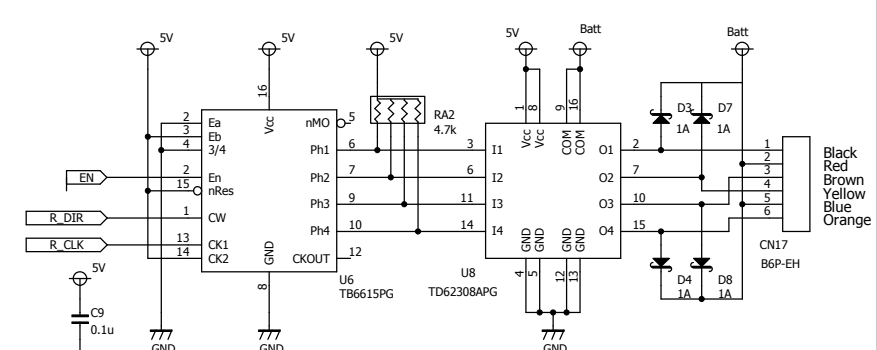
KH39FM2-801 (Unipolar, 1.8deg/step)



! Input signals are 3.3V CMOS and TB6615PG is 5V TTL (V_IH_min = 2.0V)

Stepper Motor Driver (R)

KH39FM2-801 (Unipolar, 1.8deg/step)



! Input signals are 3.3V CMOS and TB6615PG is 5V TTL (V_IH_min = 2.0V)